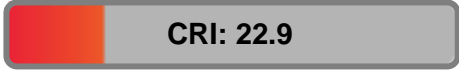


Color Temperature:



Total Lumen Output:
33.4 lm

Light Quality:

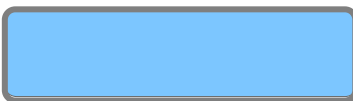


Peak:
7.62 cd

Light Efficiency:



Power: 7.5 W



CIE 1931
x: 0.258
y: 0.259

Test: Full On

Date: 10/22/2018

Voltage: 116 V

Current: 0.064 A

Frequency: 60 Hz

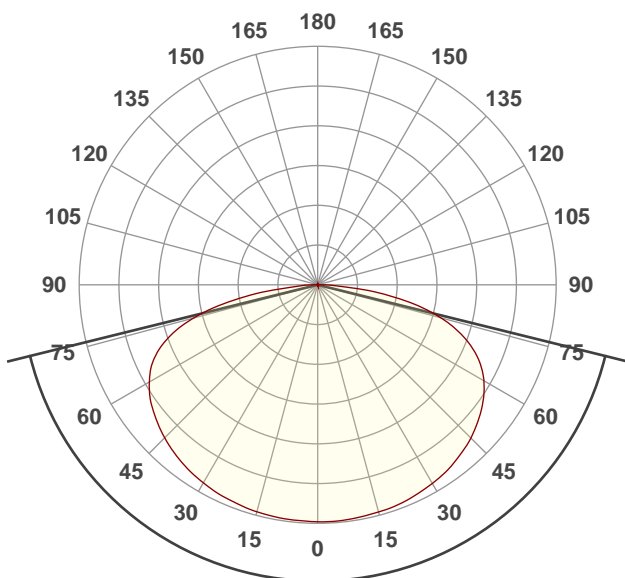
CRI: 22.9

CQS: 38.2

TM30: 34.8

Note:

Beam Angle

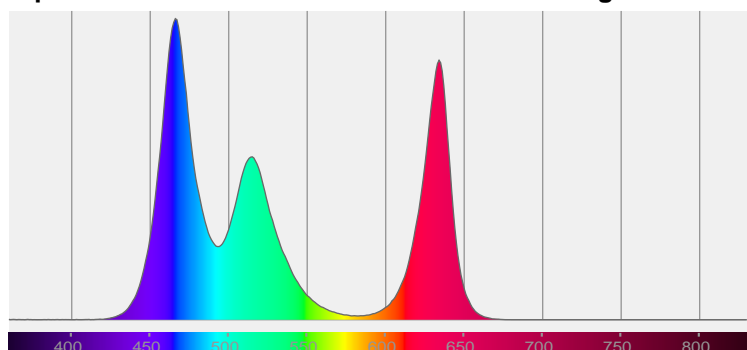


152.2°

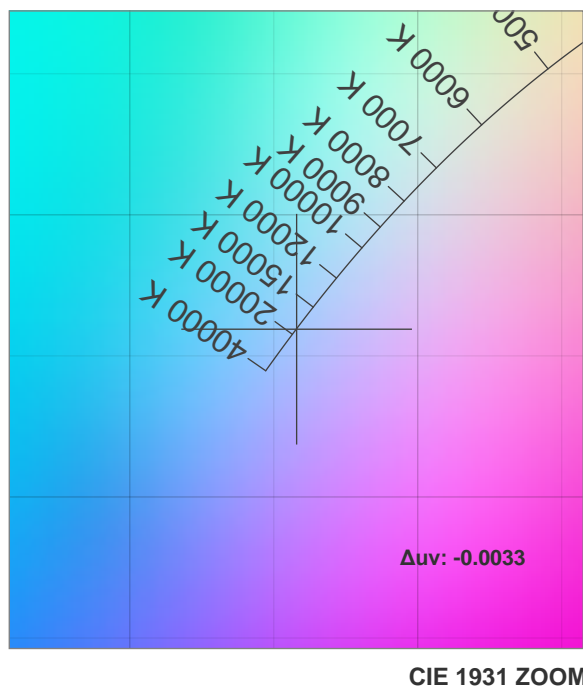
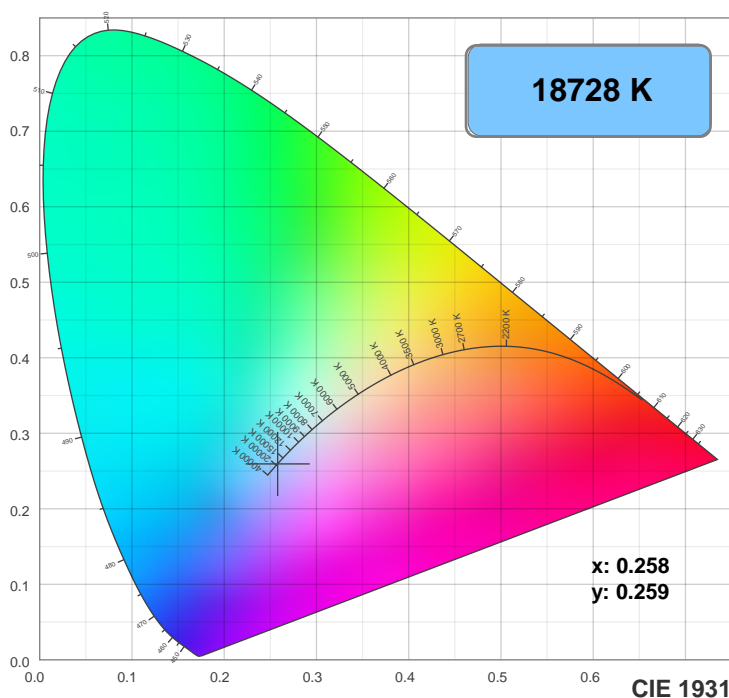
Beam Angle 50%	Field Angle 10%	Cutoff Angle 2.5%
152.2°	172.3°	180.8°

Spectra

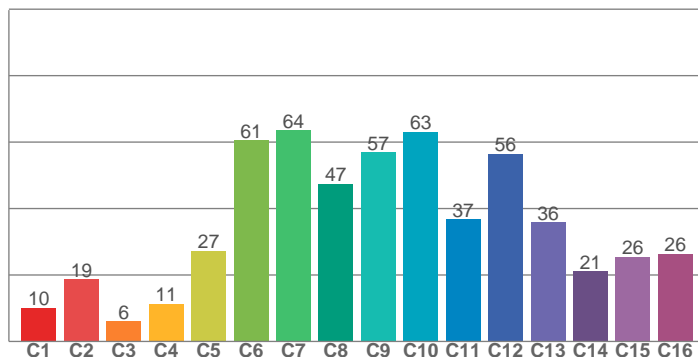
Dominant Wavelength: 474nm



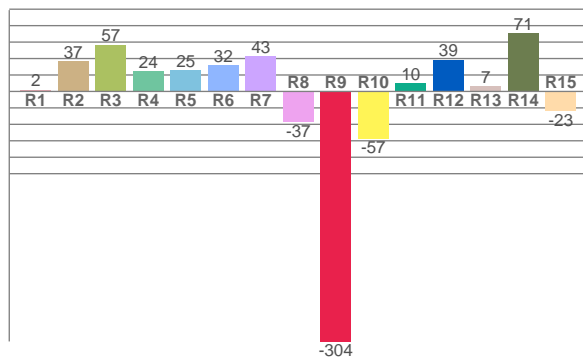
Color Details



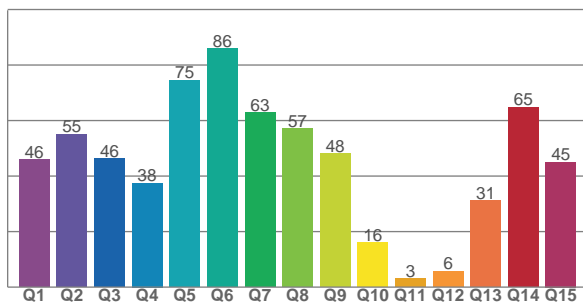
TM30: 34.8



CRI: 22.9 (R1-R8)



CQS: 38.2



CRI R values, only R1-R8 are used to calculate final CRI value

R1	R2	R3	R4	R5	R6	R7	R8	R9	R10	R11	R12	R13	R14	R15
2.0	36.5	56.8	24.4	25.4	31.9	43.2	-36.8	-304.0	-57.2	10.3	38.7	6.7	71.1	-23.4

TM30 C Values, 16 binned values out of total of 99 C values

C1	C2	C3	C4	C5	C6	C7	C8	C9	C10	C11	C12	C13	C14	C15	C16
10.1	18.6	6.0	11.4	27.3	60.6	63.5	47.4	57.0	63.0	36.7	56.5	35.9	21.1	25.5	26.4

CQS Q Values

Q1	Q2	Q3	Q4	Q5	Q6	Q7	Q8	Q9	Q10	Q11	Q12	Q13	Q14	Q15
45.9	55.1	46.4	37.5	74.6	85.8	62.8	57.1	48.0	16.1	3.1	5.7	31.2	64.8	45.1

Color Parameters

Color Temperature	Color Rendering Index	Red Component	Color Fidelity	Color Gamut	Color Quality Scale	Color Coordinate CIE 1931	Color Coordinate CIE 1931	Color Coordinate	Color Coordinate	Color Deviation from Black Body
CCT	CRI	CRI R9	TM30 Rf	TM30 Rg	CQS	x	y	u	v	Δuv
18728 K	22.9	-304.0	34.8	100.8	38.2	0.258	0.259	0.184	0.278	-0.0033

TM30 Details

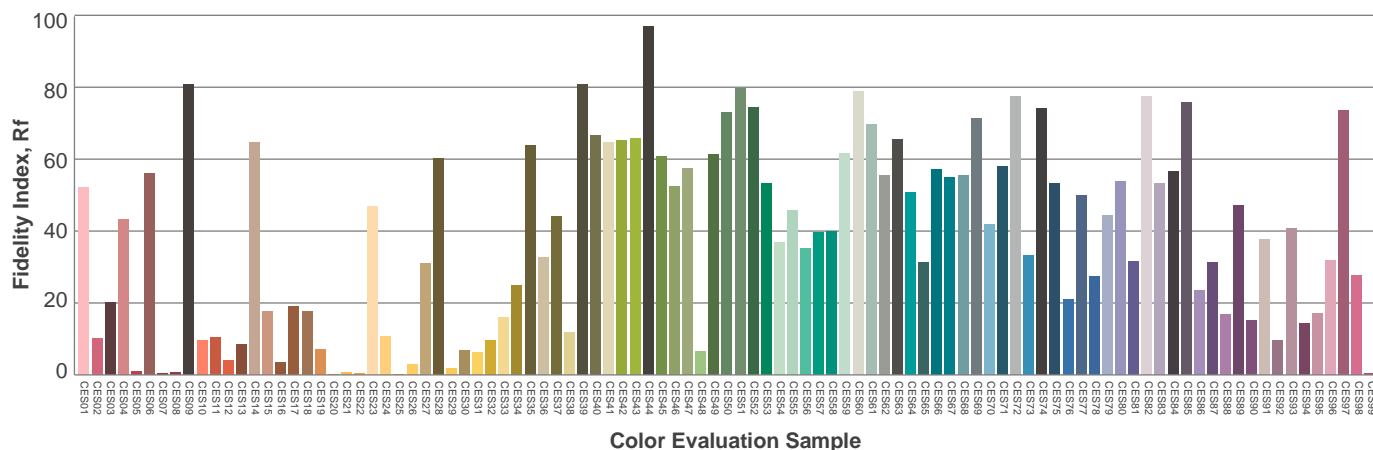
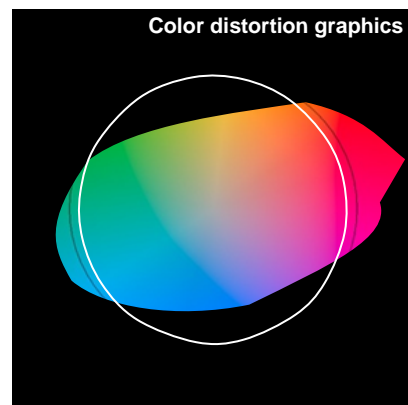
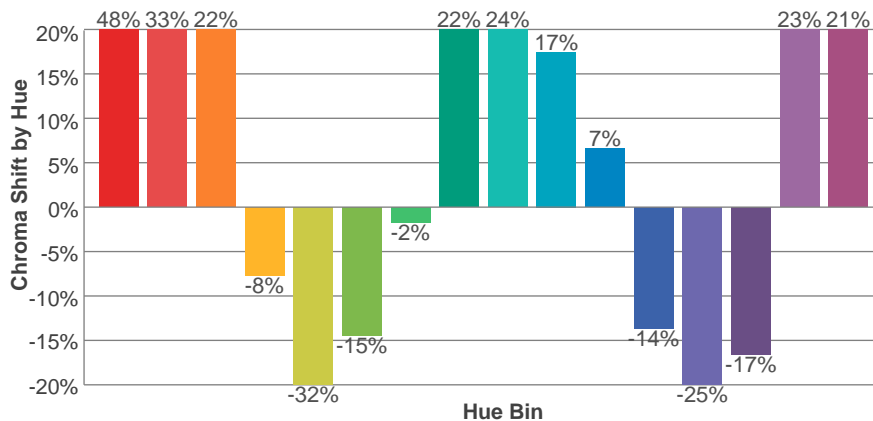
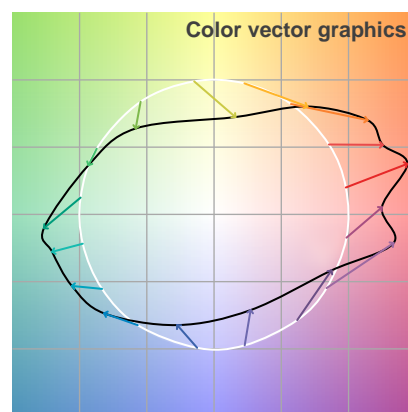
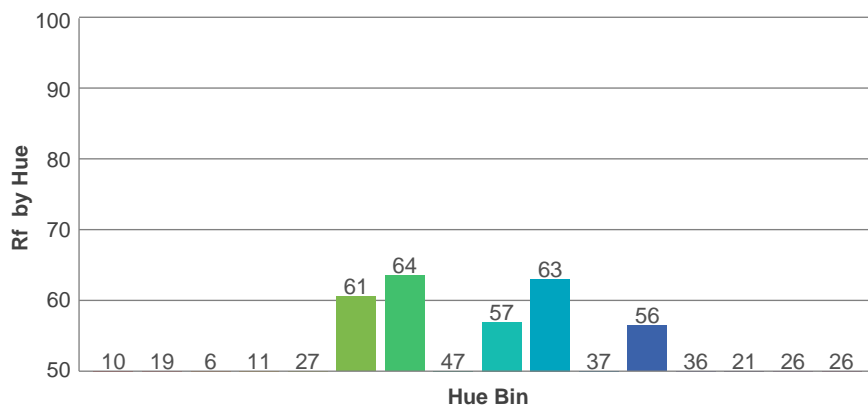
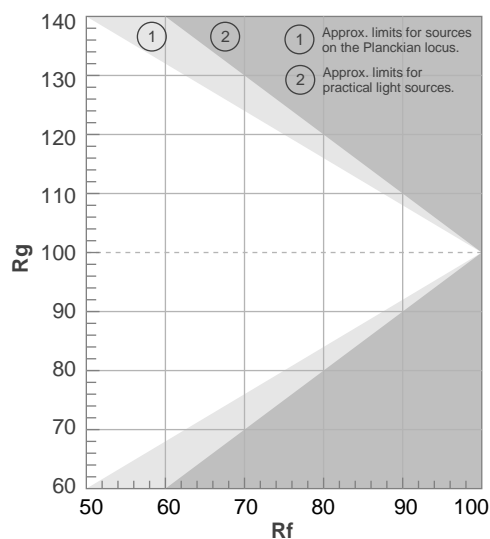
Rf 34.8

Fidelity Index Rf

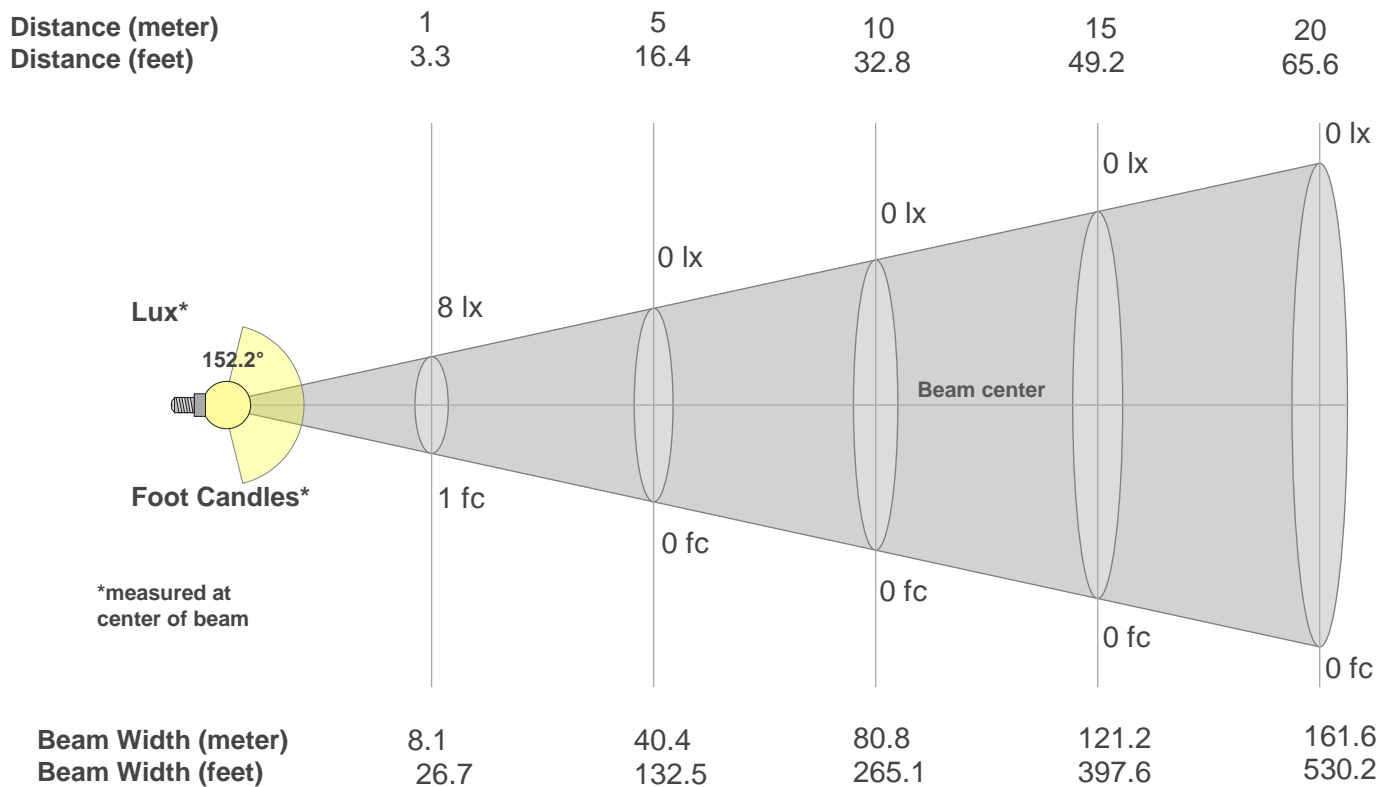
Rg 100.8

Gamut Index Rg

Hue Bin	R _f	Graphic shifts (%)	
		Chroma	Hue
1	10	48%	8%
2	19	33%	-22%
3	6	22%	-54%
4	11	-8%	-49%
5	27	-32%	-25%
6	61	-15%	14%
7	64	-2%	14%
8	47	22%	28%
9	57	24%	1%
10	63	17%	-14%
11	37	7%	-26%
12	56	-14%	-18%
13	36	-25%	9%
14	21	-17%	42%
15	26	23%	56%
16	26	21%	27%



Beam Details



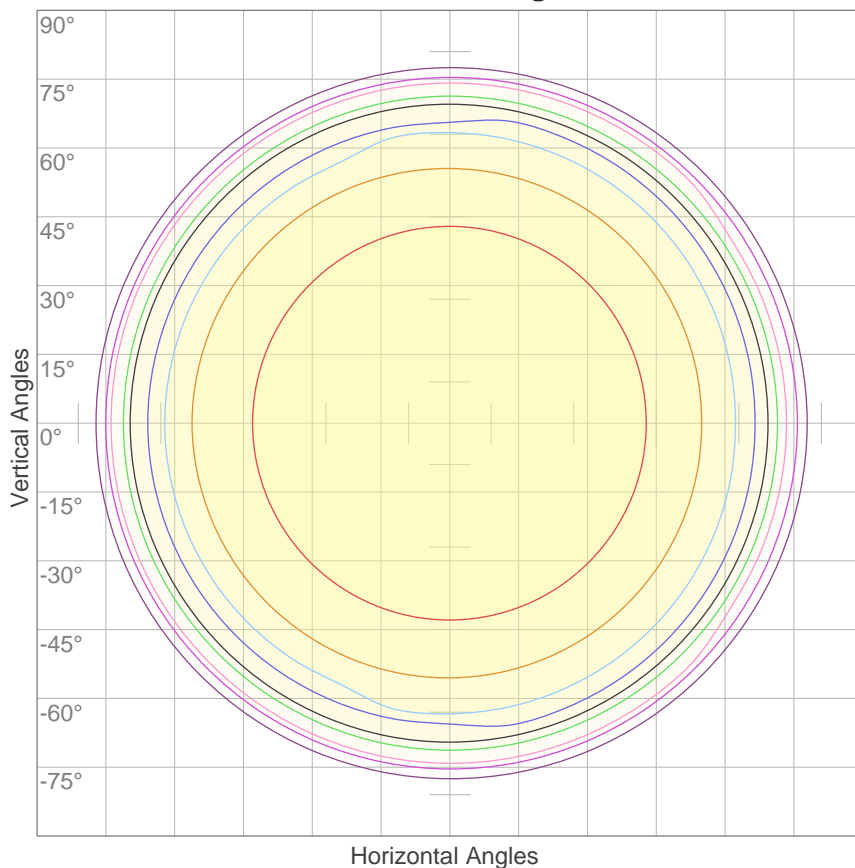
Beam Intensities from 1-20m

m	1	2	3	4	5	6	7	8	9	10	11	12	13	14	15	16	17	18	19	20
ft	3.3	6.6	9.8	13.1	16.4	19.7	23	26.2	29.5	32.8	36.1	39.4	42.7	45.9	49.2	52.5	55.8	59.1	62.3	65.6
lx	8	2	1	0	0	0	0	0	0	0	0	0	0	0	0	0	0	0	0	0
fc	0.7	0.2	0.1	0	0	0	0	0	0	0	0	0	0	0	0	0	0	0	0	0

Beam Angle 50%	Field Angle 10%	Cutoff Angle 2,5%	Intensity Ratio in 120° Cone	Intensity Ratio in 90° Cone
152.2°	172.3°	180.8°	66.0%	40.3%

ISO Diagrams

ISO Candela Diagram



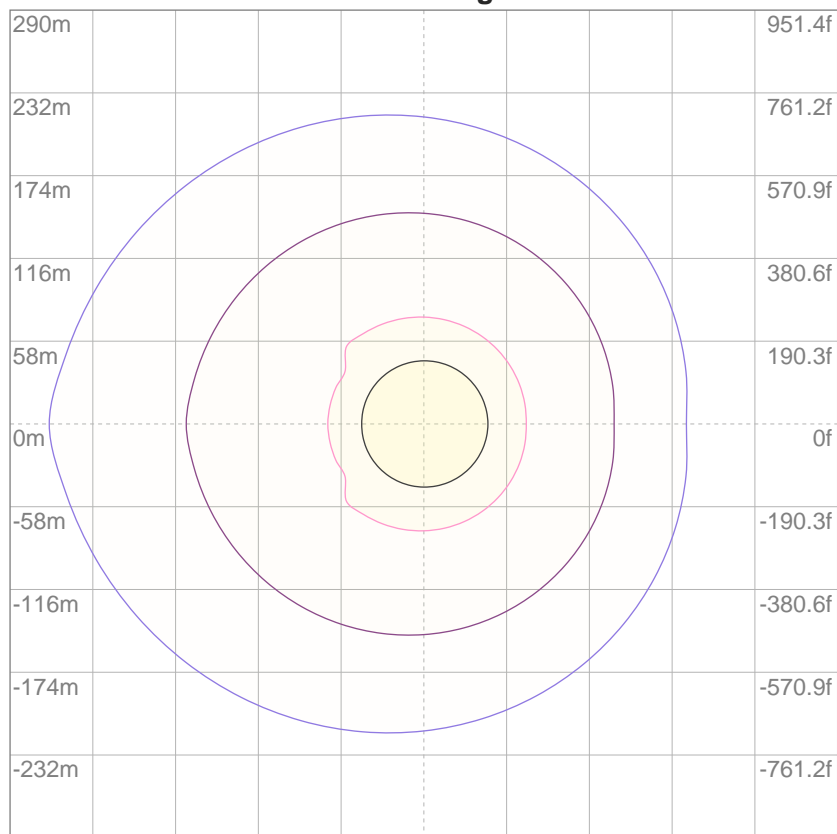
10%	1 cd
20%	2 cd
30%	2 cd
40%	3 cd
50%	4 cd
60%	5 cd
70%	5 cd
80%	6 cd
90%	7 cd

Conditions:

Number of c-planes: 2

Candela at center: 8 cd

ISO Lux Diagram



3%	2.29m lx
5%	3.81m lx
10%	7.62m lx
30%	22.9m lx
50%	38.1m lx

Conditions:

Number of c-planes: 2

Lux at center: 76.2m lx

*Lux distribution on a surface
when lamp is mounted at 10
meters from the surface.*